

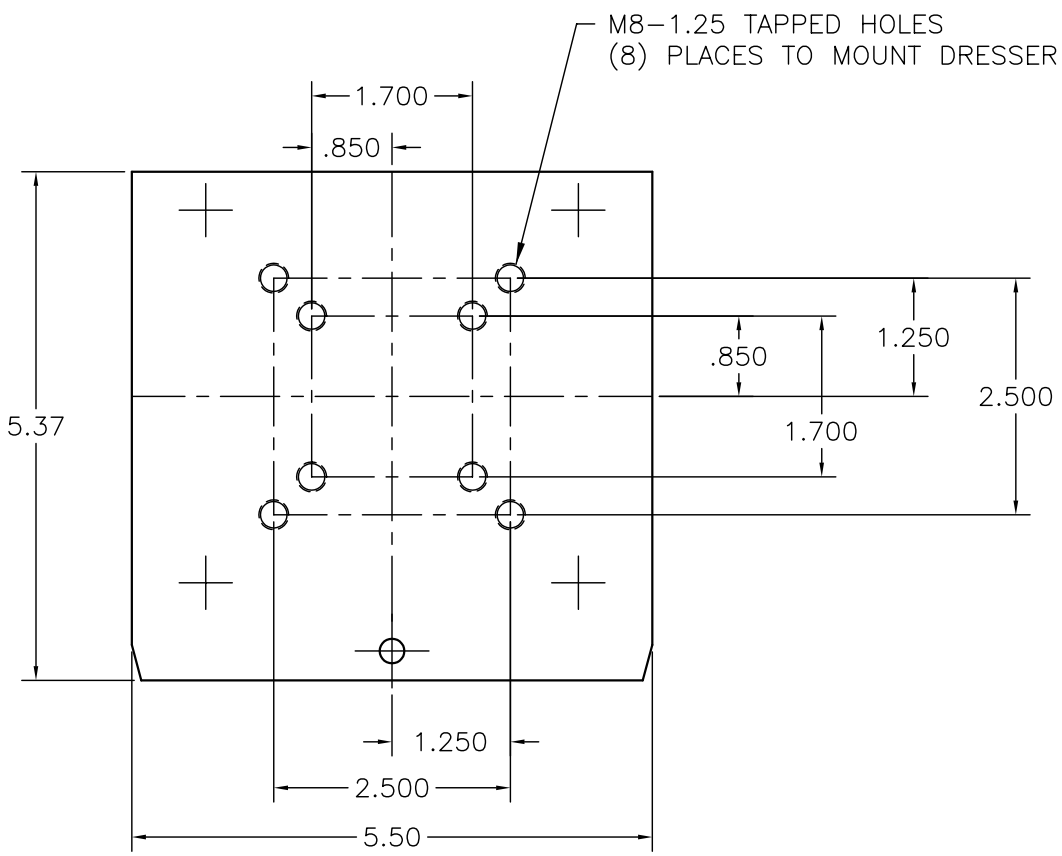
Stillwater TECHNOLOGIES INC.

Model #E4200-1 Tip Dresser Specifications:

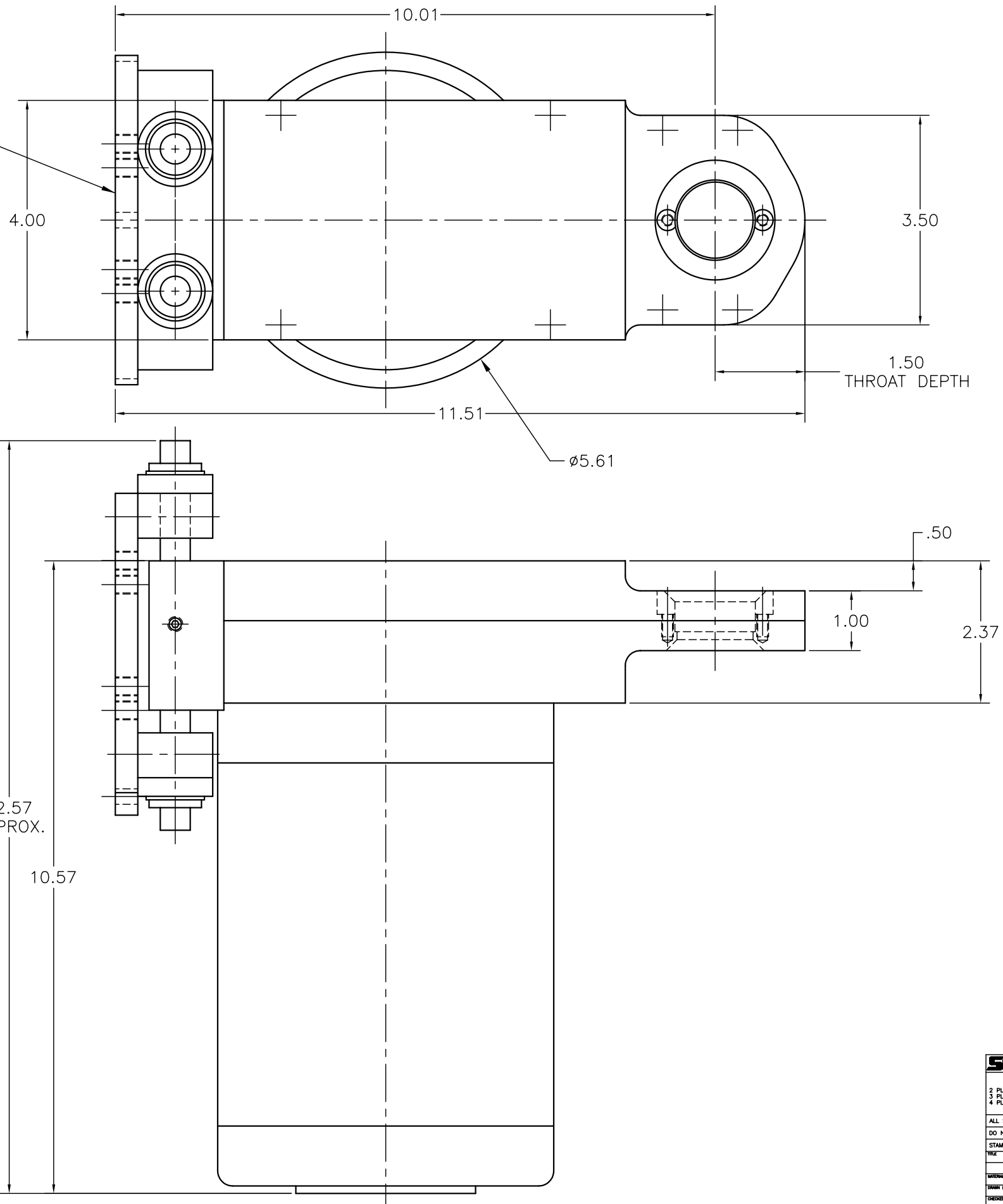
Features:

- Electric Motor:
 - ½ hp Water Resistant Motor
 - Measured Cutter RPM:
 - 230 vac wired Motor: 215 rpm
 - 460 vac wired Motor: 215 rpm
- Bottom Motor Mounting Location
- Equalizer is built into Tip Dresser
- Aluminum Billet Construction
- Ball Bearings used throughout
- Nose Thickness: 1.00" [25.4mm]
- Throat Depth: 1.50" [38.1mm]
- Recommended Tip Squeeze Pressure:
 - 200-400 Lbs. [91-181 kg]
- Customized Cutter configurations available
- Weight: 33.4 lbs. [15.3 kg.]





MODEL SHOWN HAS
QUICK CHANGE MOUNTING



Sillwater TECHNOLOGIES, INC.
1040 S. DORSET RD. - TROY, OHIO 45373

TOLERANCES UNLESS OTHERWISE SPECIFIED

INCH TOLERANCE	mm TOLERANCE
2 PLACE DECIMALS +/- .015"	1 PLACE DECIMALS +/- 0.4 mm
3 PLACE DECIMALS +/- .005"	2 PLACE DECIMALS +/- 0.13 mm
4 PLACE DECIMALS +/- .0005"	3 PLACE DECIMALS +/- 0.013 mm

ANGLES ±1°

ALL SHARP EDGES MUST BE BROKEN, UNLESS OTHERWISE SPECIFIED

DO NOT SCALE DRAWING

STAMP DRAWING NUMBER AND REVISION SYMBOL ON EACH PART

TRX SALES DRAWING
#E4200-1 DRESSER

DATE	1/08/04	SCALE	FULL
DRAWN BY	GLN	CHECKED BY	

SHEET 1 OF 1
E4200-1