

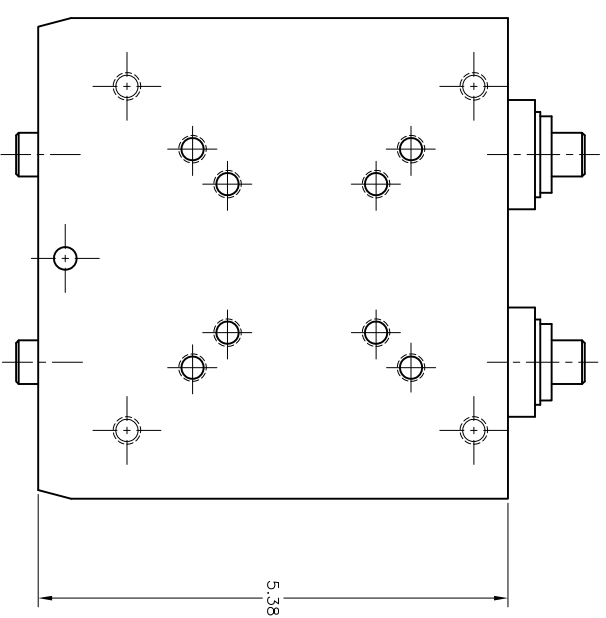
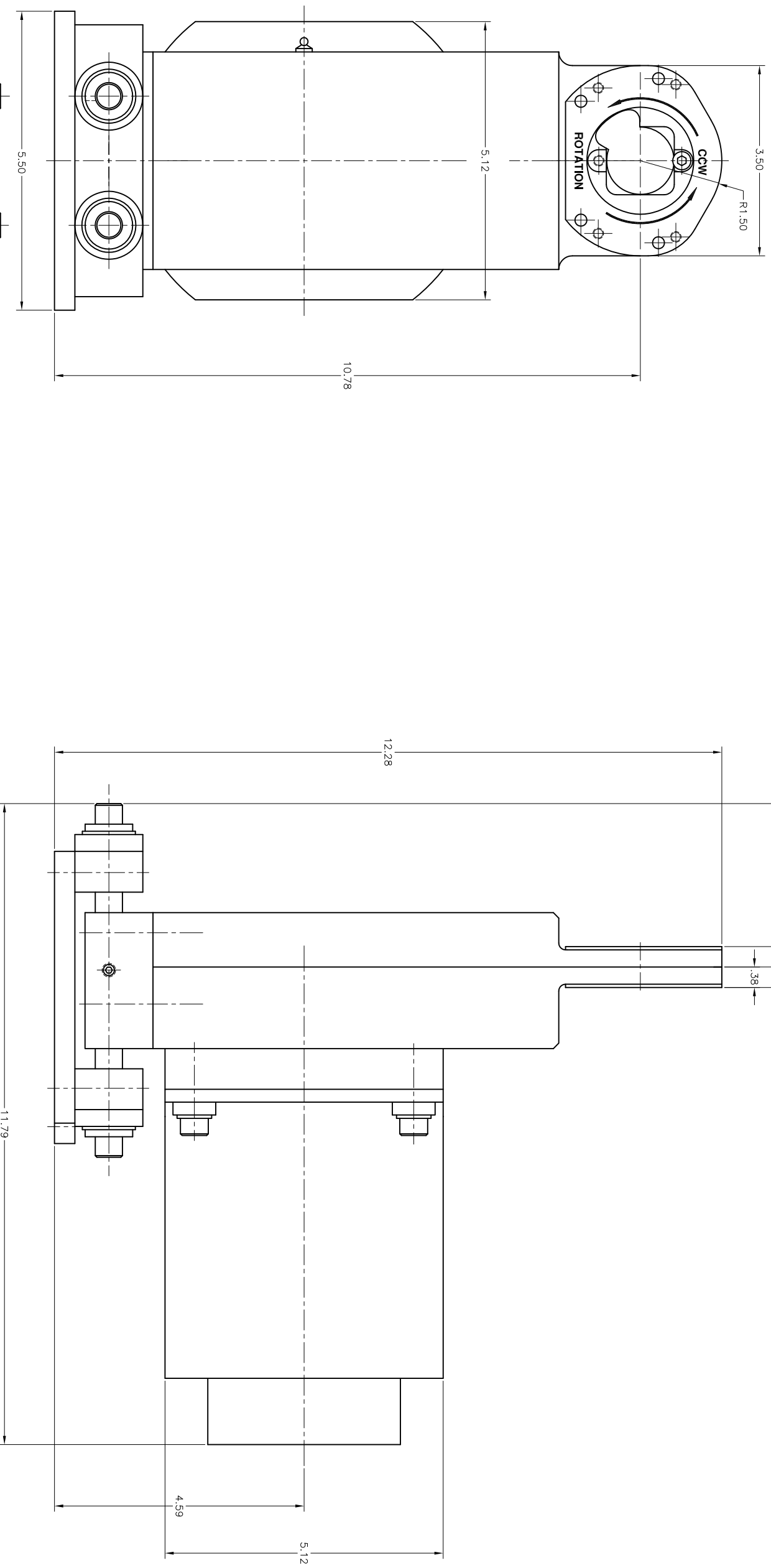
# Stillwater TECHNOLOGIES INC.

## Model #E4100-1 Servo Tip Dresser Specifications:

### Features:

- Fanuc Servo Motor:
  - 1.6 hp Motor
  - Measured Cutter RPM: 420
- Bottom Motor Mounting Location
- Equalizer is built into Tip Dresser
- Aluminum Billet Construction
- Ball Bearings used on all gear shafts
- Nose Thickness: 0.75" [19.1mm]
- Throat Depth: 1.50" [38.1mm]
- Recommended Tip Squeeze Pressure:  
200-400 Lbs. [91-181 kg]
- Customized Cutter configurations available
- Weight: 33.4 lbs. [15.3 kg.]





NOTE:  
 LUBRICATE DRESSER WITH:  
 AMSOIL  
 NLGI No. 1.5 GC-LB  
 EXTREME PRESSURE GREASE

<b>Stillwater</b> TECHNOLOGIES, INC.		1000 S. 1000th St. - 1000 - 1000 - 1000	
TOLERANCES UNLESS OTHERWISE SPECIFIED		1 PLACE DECIMALS +/- .010	
2 PLACE DECIMALS +/- .005		2 PLACE DECIMALS +/- .010	
3 PLACE DECIMALS +/- .002		3 PLACE DECIMALS +/- .005	
4 PLACE DECIMALS +/- .001		4 PLACE DECIMALS +/- .002	
ANGLES ±		ANGLES ±	
ALL SHARP EDGES MUST BE BROKEN UNLESS OTHERWISE SPECIFIED			
DO NOT SCALE DRAWING			
STAMP DRAWING NUMBER AND REVISION SYMBOL ON EACH PART			
DATE	BY	CHKD	APP'D
7/7/11	GN	GN	GN
MODEL #E4100-1 SERVO		FULL	
SALES		DWG	
116413		ID	