

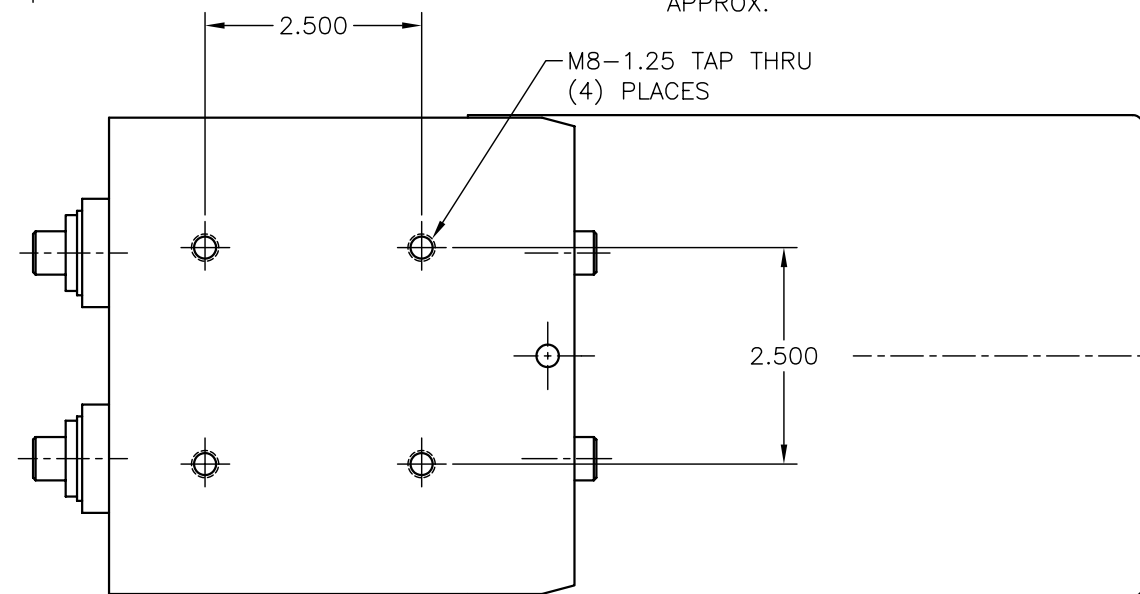
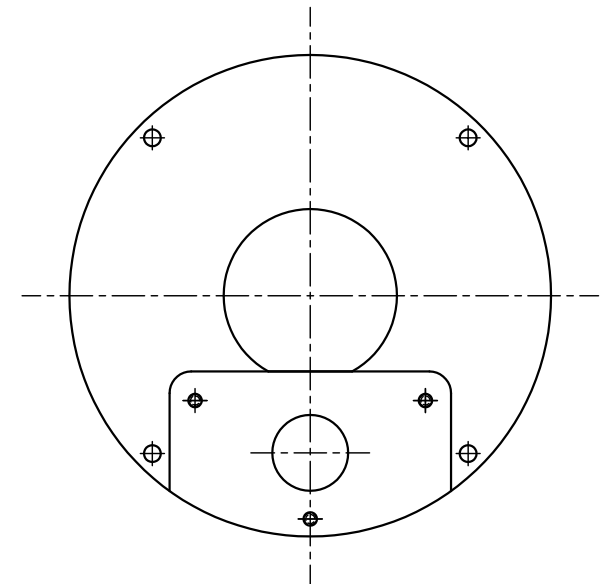
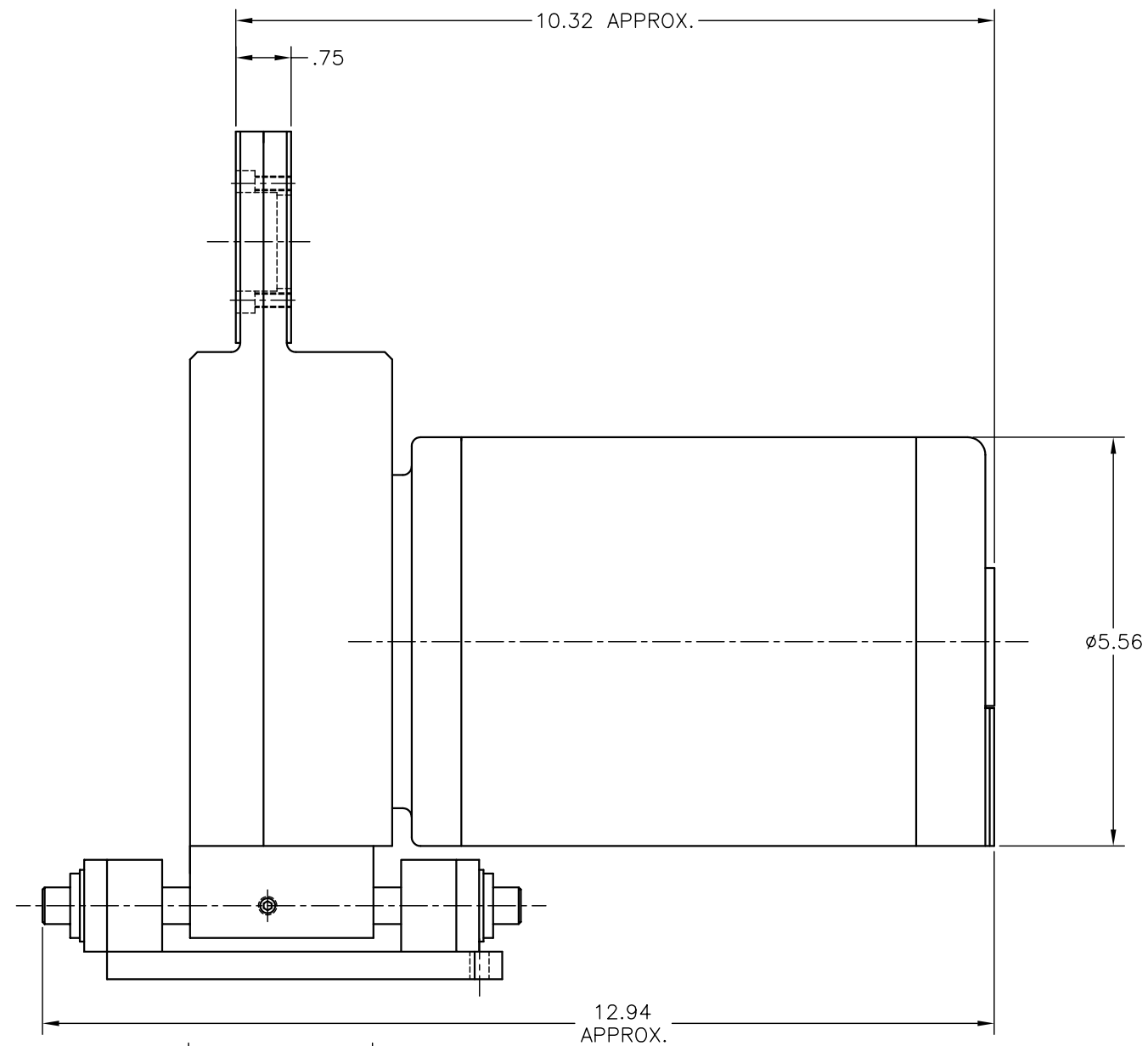
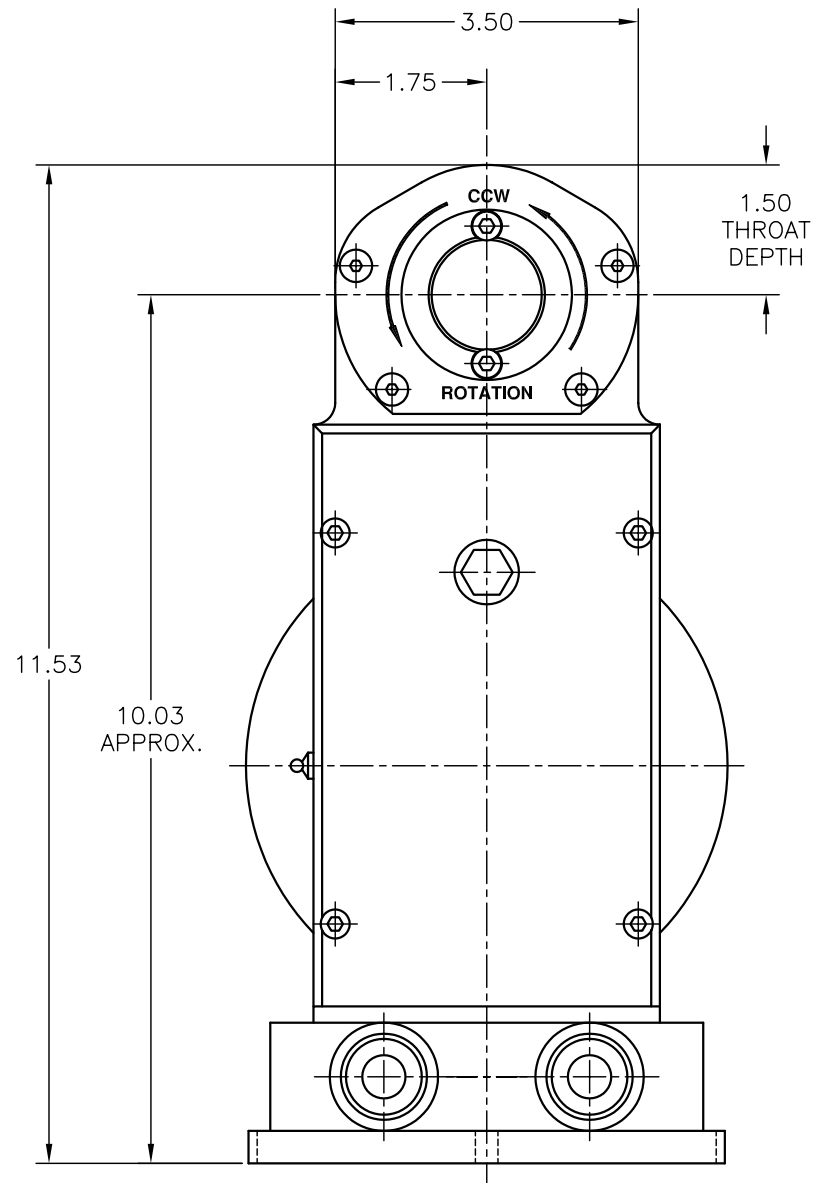
Stillwater TECHNOLOGIES INC.

Model #E4100-1 Tip Dresser Specifications:

Features:

- Electric Motor:
 - ½ hp Water Resistant Motor
 - Measured Cutter RPM:
 - 230 vac wired Motor: 215 rpm
 - 460 vac wired Motor: 215 rpm
- Bottom Motor Mounting Location
- Equalizer is built into Tip Dresser
- Aluminum Billet Construction
- Ball Bearings used on all gear shafts
- Nose Thickness: 0.75" [19.1mm]
- Throat Depth: 1.50" [38.1mm]
- Recommended Tip Squeeze Pressure:
 - 200-400 Lbs. [91-181 kg]
- Customized Cutter configurations available
- Weight: 33.4 lbs. [15.3 kg.]





Stillwater TECHNOLOGIES, INC.			
1040 S. DORSET RD. - TROY, OHIO 45373			
TOLERANCES UNLESS OTHERWISE SPECIFIED			
INCH TOLERANCE		MM TOLERANCE	
2 PLACE DECIMALS +/- .015"	1 PLACE DECIMALS +/- 0.4 mm		
3 PLACE DECIMALS +/- .005"	2 PLACE DECIMALS +/- 0.13 mm		
4 PLACE DECIMALS +/- .0005"	3 PLACE DECIMALS +/- 0.013 mm		
ANGLES ±1°			
ALL SHARP EDGES MUST BE BROKEN, UNLESS OTHERWISE SPECIFIED			
DO NOT SCALE DRAWING			
STAMP DRAWING NUMBER AND REVISION SYMBOL ON EACH PART			
TITLE ELECTRIC TIP DRESSER			
MODEL #E4100-1			
DRAWN BY	DATE	SCALE	FULL
GLN	1/25/05	FULL	ID
CHECKED BY	DATE	DRAWING NUMBER	
		E4100-1SALES	E4100-1SALES

CAD File Location: G:\USERS\DWG\STI\Tipdress\E4100-1\E4100-1Sales.dwg

REV	BY	DATE	DESC.	ECN #
-----	----	------	-------	-------